



## integrated supply chain management course

achieving Class A supply chain performance

### course overview

*Many companies suffer from a missing ingredient; the lack of a single, coherent set of day-to-day tasks that pulls the whole enterprise together. The Oliver Wight approach to supply chain integration with Supply Chain Management*

*(SCM) and Continuous Improvement helps you to learn, and then implement, the necessary controls to meet your company's goals. This foundation course will provide you with the basis for integrating all functions and processes of*

*your business with the goal being enhanced speed to market and cost reductions in your supply chain.*



together we make a difference



## *integrated supply chain management course*

### *achieving Class A supply chain performance*

This three-day course will review the elements of supply chain management and the integration of all planning and control processes. Topics include Integrated Business Management (Sales & Operations Planning), Demand Management including CPFR, Master Scheduling, Distribution Resource Planning, Material Requirements Planning, Plant Scheduling, Capacity Planning, Supplier Scheduling, Data Accuracy, and the Lean Enterprise and its impact on all of the above. Discussions include the key steps for implementation such as performing a diagnostic to determine your greatest opportunities, developing a vision to guide the initiative, and developing a milestone to define a specific area of improvement.

### *objectives* **You will learn:**

- The three elements of business excellence and how to avoid the costly trap of technological myopia
- How to establish the appropriate levels of integration with all your supply chain partners
- How to tie senior management into the planning process giving them control of the business
- How to effectively balance supply and demand meeting your customer's needs with greater responsiveness and flexibility while increasing productivity
- How to create and maintain attainable and stable production schedules
- How to develop an integrated business management process that strategically applies lean/six sigma improvements where they will be most beneficial
- How to simultaneously improve planning and control while streamlining and removing waste
- About a process where your people willingly and enthusiastically change the way they do their jobs
- How to deploy the implementation methodology that virtually guarantees your success

### *day one* **Overview of Integrated Supply Chain Management**

- Why companies embark on ISCM initiatives
- Workshop on identifying difficulties in your business
- Review of all the processes and linkages of Enterprise Resource Planning
- Review of the proven methodology for achieving operational excellence

#### **Integrated Business Management**

- How the strategic plan fits in

- The three levels of solid business planning
- Setting levels of sales and output that are consensus builders
- Workshop illustrating the IBM process

#### **Rough-cut Capacity Planning**

- The four elements of effective capacity management
- Key terms used in capacity planning
- The key resources that need to be managed
- Methods for developing load profiles
- Effective use of the process

who will  
benefit from  
this course

*People from all areas of the business will be involved in your ISCM implementation. It is essential that managers have the knowledge necessary for effective leadership and direction. This course is designed for operating managers from all the functional departments within a manufacturing company.*

## day two

### **Demand Management**

- Forecasting Workshop
- Defining the new role of demand management in today's business
- Illustrating demand planning's support of both aggregate and detailed planning
- Techniques that yield better forecasts
- The best approaches for coping with inaccurate forecasts
- Defining who the necessary participants are for effective demand planning
- Demand planning workshops illustrating the vital need for communication

### **Integrated Supply Chain Management**

- New realities in the marketplace
- Selecting the supply chain relationship that is right for you and getting started
- The three levels of collaboration in supply chain relationships
- Key techniques to support Supply Chain Management
- Review of the logistics revolution spurred on by supply chain pressure

### **Master Scheduling**

- Linking aggregate planning to detailed scheduling
- Defining a valid master schedule and managing changes
- The definition and use of time fences
- Master scheduling's role in accurate delivery promising
- Choosing a manufacturing strategy and its impact on master scheduling
- How to master schedule products with features and options
- When and how to use planning bills
- The effective way to correct an overloaded master schedule
- Master scheduling workshop on order promising
- Review of the master scheduler's job

### **Material Requirements Planning**

- Mechanics of the MRP process
- The material planner's job
- Bottom-up re-planning workshop
- How to use MRP in batch and flow shops

## day three

### **Supplier Scheduling**

- The key elements of supplier scheduling
- The roles of supplier schedulers and buyers
- Supplier scheduling in a lean environment
- Breaking traditional purchasing practices for improved performance

### **Plant Scheduling / Lean Enterprise**

- Different plant environments and scheduling techniques
- The objective of plant scheduling
- How to effectively use operations scheduling in job shop/batch environments
- Key production scheduling rules
- Responsibilities of production supervisors and planners
- When finite scheduling applies
- The impact of "time" on quality and cost
- The seven forms of waste
- Continuous improvement methodology
- The essential elements of Kanban
- Kanban workshop illustrating the method and value of the process
- When to use repetitive scheduling and how the process works

### **Detail Capacity Planning**

- Key inputs that make up work center data

- Managing queues
- The objectives of input/output control
- How to determine realistic capacity
- Capacity planning for flow and batch

### **Data Accuracy**

- How to structure and integrate bills of material
- The necessary levels of accuracy and how to achieve them
- The five elements that make up an effective BOM change system
- The four objectives of cycle counting
- Maintaining accurate master detail file information

### **Implementation**

- Conducting a diagnostic to focus effort on most-needed changes
- The critical need for education before action
- Communicating management's vision to guide the process
- Costs/benefit analysis to determine the initiative's priority
- Developing a "milestone" to define the scope of the initiative
- The change management process: a road map for success

## *the journey to business excellence*

Oliver Wight are leading business improvement specialists who educate, coach and mentor people to lead and sustain change on the journey to business excellence and outstanding business performance. Oliver Wight is a worldwide consultancy with offices throughout Europe, in North and South America and the Asia/Pacific region.

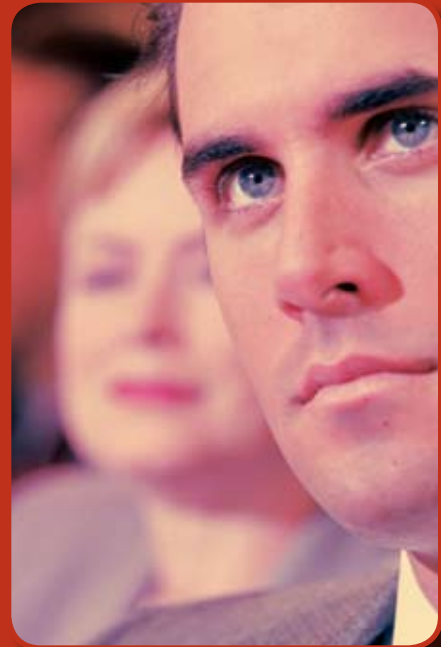
*At the leading edge of management thinking and practice, our unique Integrated Business Management process and Integrated Business Model lies at the heart of client journeys to business excellence. This model addresses all aspects of company planning and execution from the boardroom to working levels in manufacturing and service sectors. It provides one common agenda for your company with one set of numbers and one set of priorities. It links diverse processes in managing the extended supply chain, product and customer portfolios, customer demand, and strategic planning into one seamless management process.*

*The renowned 'Proven Path' process for change management lies at the heart of our approach to 'Integrated Change Management.' This integrates your strategic journey to excellence through major project management to everyday improvement programs ensuring they are visible and contribute to company goals. This process promotes sustainable change through line ownership for successful ongoing management, accelerating management processes and controlling waste and variability.*

*Your implementation is supported by our practical experience and knowledge through facilitation, coaching and education backed by our unique Class A Checklist, the longest-established business excellence assessment tool.*

### *Course Duration and Hotels*

*The course runs three days, beginning at 8:00 a.m. on the first day and ending at 3:00 p.m. on the last day. As a convenience for participants, we reserve hotel rooms in the hotels where the courses are held. Just let us know your needs at the time of booking into the course.*



### **Oliver Wight AMERICAS, Inc.**

52 Newport Road  
New London, NH 03257  
United States

Telephone: (800) 258-3862  
Facsimile: (603) 526-5809

info@oliverwight.com  
www.oliverwight.com

*Oliver Wight*<sup>®</sup>  
OLIVER WIGHT

**Asia/Pacific**  
38 Keats Street  
Sandringham VIC 3191 Australia

**Europe, Africa & Middle East**  
The Willows, The Steadings Business Centre  
Maisemore, Gloucester GL2 8EY, UK

**Americas**  
52 Newport Road, New London  
New Hampshire 03257, USA